

Stand-Off MPV Bracket

U. S. Patent # 8,875,467

EXO-TEC Manufacturing, Inc.

330 Libbey Industrial Parkway, Suite 500
Weymouth, MA 02189
(508) 580-0901
www.exo-tec.biz

DESCRIPTION

The Stand-Off MPV Bracket is an adjustable bracket used for the fastening of rain screen panel veneers to above grade exterior walls in buildings. The bracket was developed specifically to facilitate the compliance of metal panel veneers with the 2012, 2015 & 2018 IEC requirements for continuous insulation over the exterior sheathing in metal framed walls in Climate Zones 4 through 8.

FEATURES & BENEFITS

- Virtually eliminates thermal bridging of the metal panel veneer attachment system through the continuous insulation over the sheathing in metal framed building exterior walls.
- Eliminates the need for shimming the metal panel attachment system by providing adjustability.
- Provides for the mechanical fastening of rigid and semi-rigid continuous insulation.
- Accommodates various thicknesses of insulation.
- Structural components of the bracket are fire proof to comply with IBC requirements.
- Engineered for 1'-4" horizontal x 4'-0" vertical spacing.

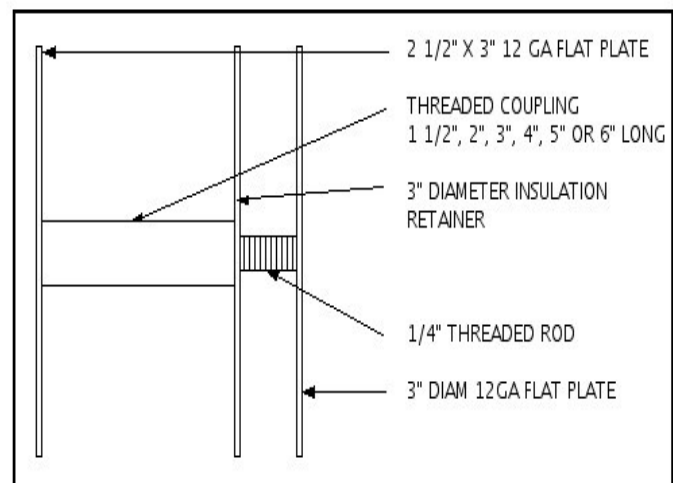
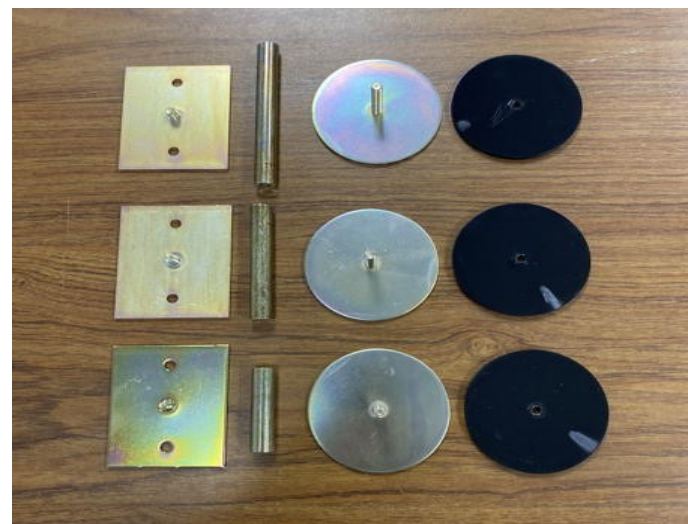
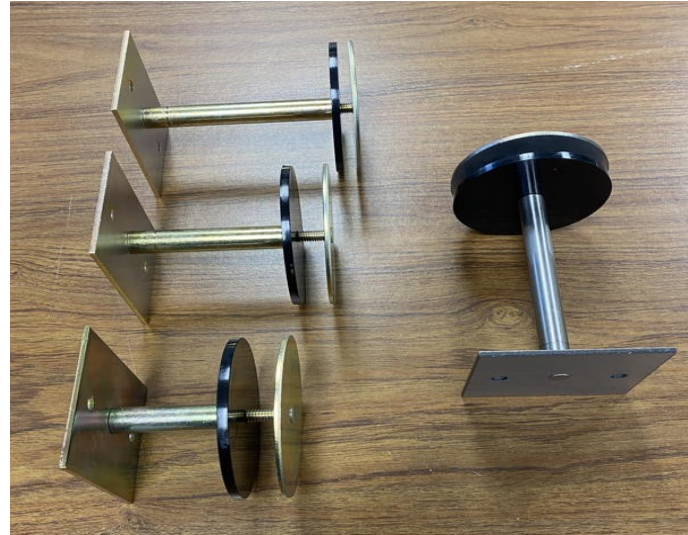
TEST RESULTS

Compressive Strength	550 lbs
Tensile Strength	550 lbs
Flexural Strength (at 1" maximum extension)	60 lbs

Test report available upon request

AVAILABLE FINISHES

AISI C1008/1010 CR steel with zinc & yellow chromate plating per ASTM B633 Fe/ZN 25 Type II or 304 stainless steel



INSTALLATION

1. Determine vertical spacing of the Stand-Off MPV Bracket and mark accordingly.
2. Install the base plate of the Stand-Off MPV Bracket by centering it vertically on the vertical spacing marks and installing the specified fasteners in the top and bottom holes of the base plate.
3. Install insulation layer by wedging rigid and semi-rigid insulation between the Stand-Off MPV Bracket base plates or apply spray foam insulation.
4. For rigid and semi-rigid insulation, thread the insulation retainer onto the threaded rod of the top plate of the Stand-Off MPV Bracket. This step is omitted for spray foam insulation.
5. Thread the top plate into the base plate until the top face of the top plate is at the desired plane. Maximum thread exposure is 1".
6. Thread the insulation retainer down until it is seated tightly against the rigid or semi-rigid insulation. This step is omitted for spray foam insulation.
7. Fasten the continuous connection hardware (flat plate, z-furring or hat furring) to the top plate of the Stand-Off MPV Bracket with two fasteners. This will prevent the top plate from rotating out of the desired plane.
8. Install the rain screen veneer bracket
9. Install the rain screen veneer.

PACKAGING

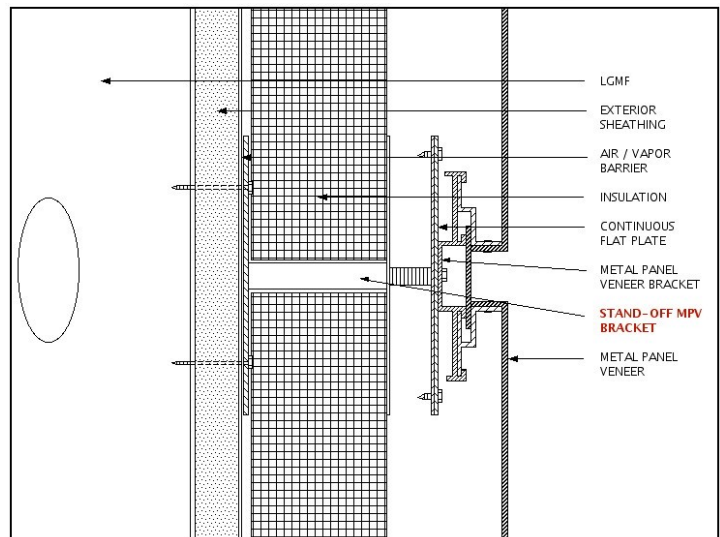
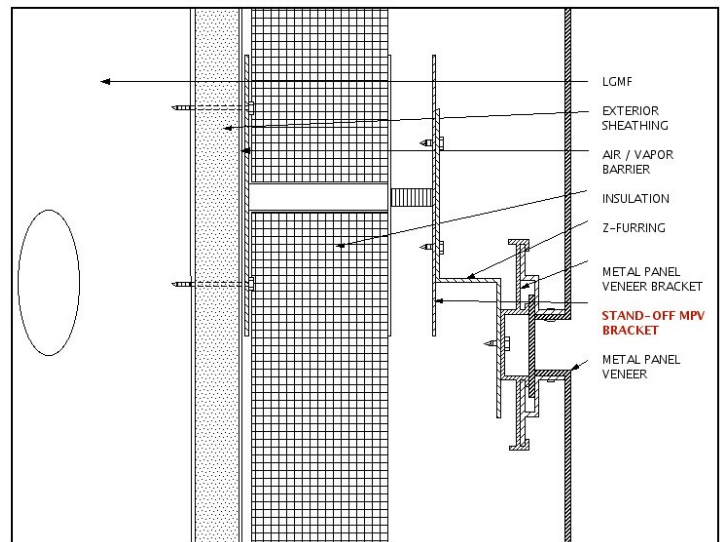
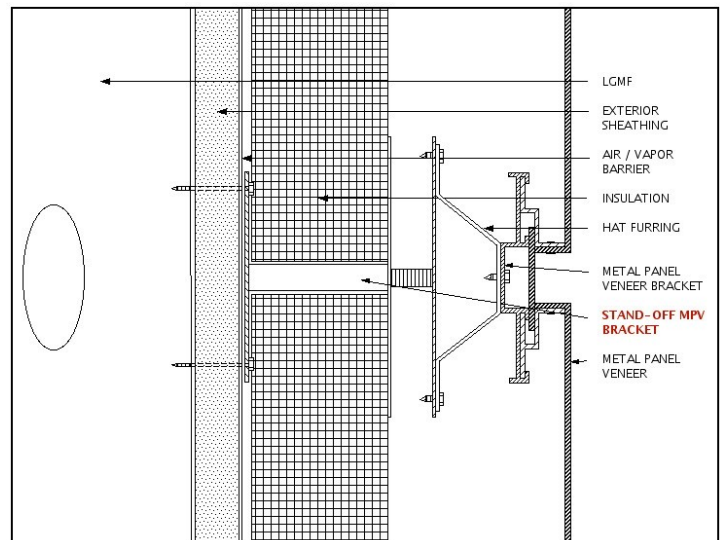
Each component, base plate, insulation retainer and top plate are packaged in separate sealed 5 gallon pails.

2" Base Plates	200 pcs/pail	60 lbs/pail
3" Base Plates	150 pcs/pail	60 lbs/pail
4" Base Plates	125 pcs/pail	60 lbs/pail
5" Base Plates	100 pcs/pail	60 lbs/pail
6" Base Plates	75 pcs/pail	60 lbs/pail

Insulation Retainer	200 pcs/pail	10 lbs/pail
---------------------	--------------	-------------

Top Plate	200 pcs/pail	48 lbs/pail
-----------	--------------	-------------

Sold in full pail Quantities



LIMITED WARRANTY

The manufacturer warrants this product to be free of defects in workmanship and materials for the life of the structure. If any product proves to contain manufacturing defects that substantially affect its performance, the manufacturer, at its option, will replace it or refund its purchase price. The dollar value of the manufacturer's liability shall not exceed the purchase price of the material in question.